



LifeSize Software
Version 3.5
Training

March 2007

Agenda

- Overview
- New Features
- Key Enhancements
- Training Support
- Next Steps

Overview

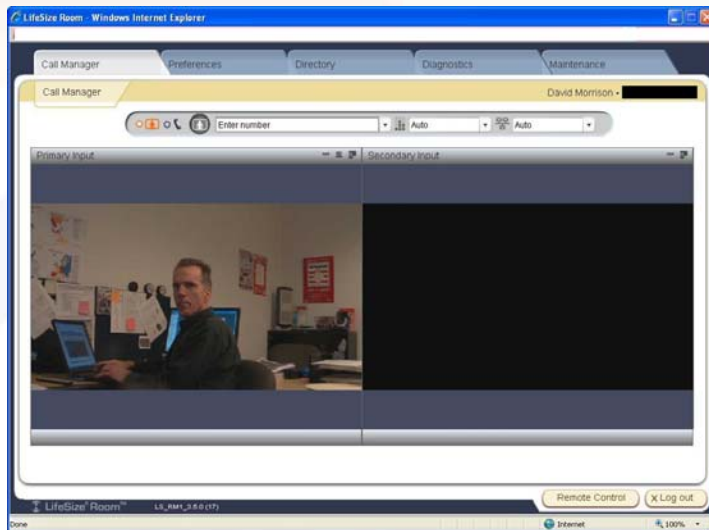
- Introducing LifeSize Software version 3.5
- Designed as a maintenance release for all LifeSize Video Systems including LifeSize Phone when attached to the video system as an audio device
- This software release significantly improves user's overall experience
- Please note, the LifeSize Phone (stand alone mode) version 3.5 software will be released shortly

New Features

- Video Snapshots
- G.728 - low bandwidth audio codec
- Presentation Icons
- Virtual Presentations using SIP
- Individual Call Statistics
- New Time Zone – Venezuela

Video Snapshots

Idle



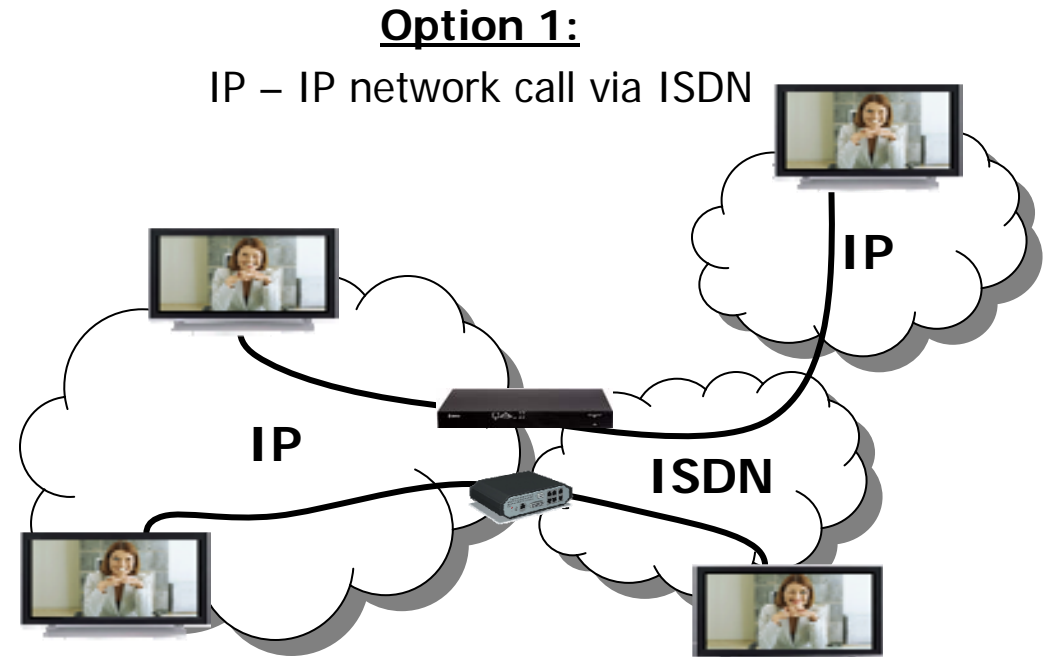
In Call



- Available from the Call Manager web administration interface
- JPEG snapshots can be saved in .jpg format
- Snapshots available
 - ➔ Idle – Near end
 - ➔ In Call – Near / Far ends
- Administrative options: Enable/Disable Snapshots (default is enable)
- Video system does not generate snapshots when it is asleep

G.728 - low bandwidth codec support

- New low bandwidth audio codec support
 - Audio bandwidth allocated at 16 Kbps
- Decreased percentage of bandwidth for audio
 - Improves video quality
- Perfect for low bandwidth calls via ISDN
 - Ideal between 128 and 256 Kbps





LifeSize IP-ISDN Gateway Options:

- LifeSize Networker
- LifeSize Gateway-PRI



Presentation Icons

- Presentation starting dialog to indicate presentation is starting but not appearing in display yet
 - User interface message “Starting the Presentation”
- Active presentation indicators for presentation sent or received
 -  Receiving presentation indicator
 -  Sending presentation indicator

Virtual Presentations using SIP

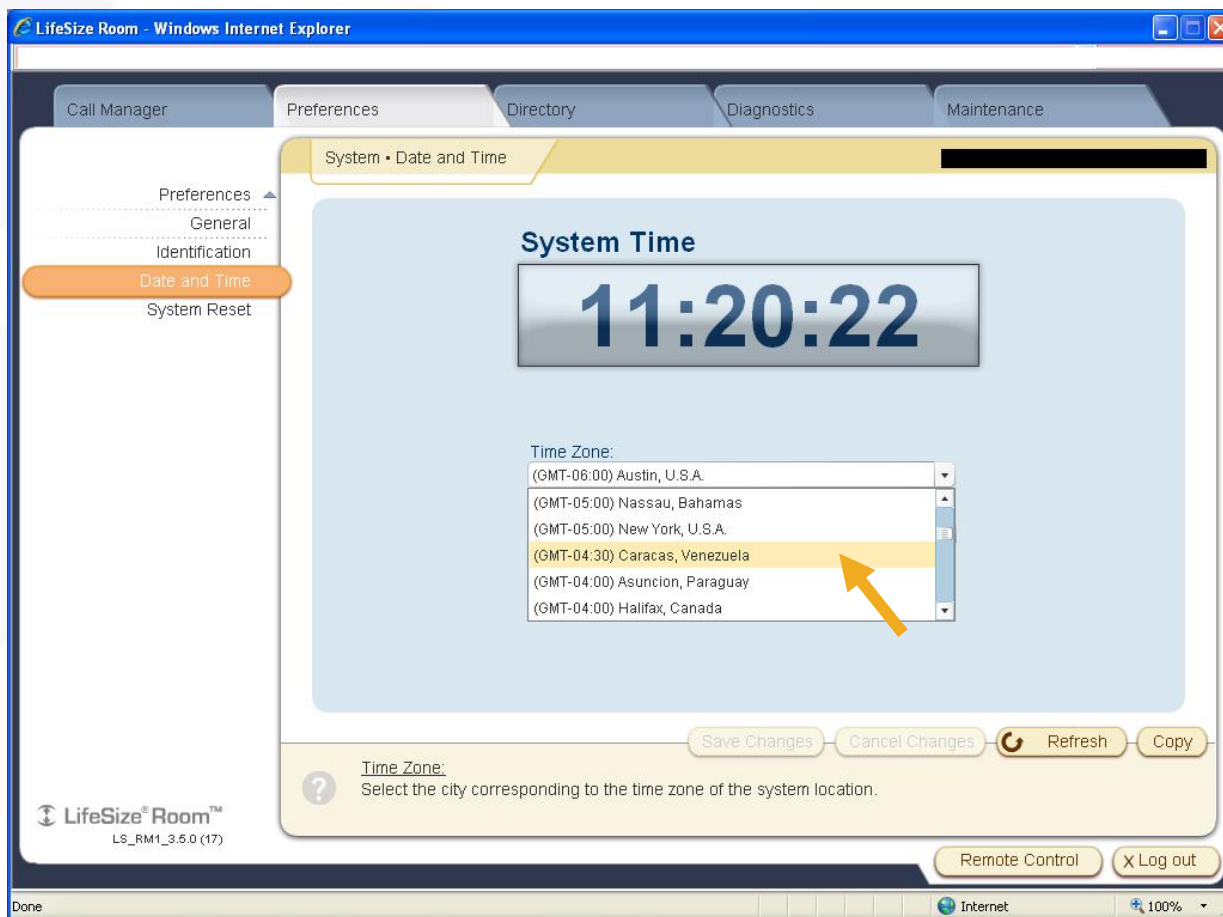
- Currently, SIP standard does not support presentation sharing similar to H.239 Dual Video under the H.323 standard
- LifeSize implemented simplified method for sharing presentation when using SIP
- Enabled through the use of the **green button**
 - Not called Start Presentation in this mode
 - Rather, labeled as Secondary Output name
- Green button simply swaps the inputs
 - System sends video from primary output
 - In this case it is the PC connected to the secondary output port
- Pressing the green button again returns the system to the primary video input (i.e. Camera 1)
- When the call is over, system automatically returns inputs to their original selection

Individual Call Statistics

- Shows call duration for each individual caller in conference call
 - ➔ Elapsed time shown in hours, minutes, seconds
- Call statistics available in both user interface and web administrator user interface
- Improved troubleshooting as cumulative packet loss statistics more meaningful

New Time Zone – Venezuela

- Caracas, Venezuela now available



Key Enhancements

- Audio
- Camera
- Embedded MCU
- Directory
- Increased Bandwidth Throughput
- Save & Restore
- LifeSize Networker Support
- Management

Audio Enhancements

- Changes to audio configuration preferences
 - Affects both User and Administrator levels
 - Simplify and streamline multiple audio input device selection process
 - Only one device can be active at given time
 - Auto (default setting) prioritizes active list
- Added Active Microphone volume adjustment settings
 - Volume function added to list of input sources

Camera Improvements

- Enhancements to reduce noise in video from LifeSize Cameras
 - Results are:
 - Sharper image
 - Increased encoder performance
- New Indoor options for HD Camera White Balance
 - Indoor 1
 - Balances colors with more blue
 - Same as Indoor with version 3.0 code
 - Indoor 2
 - Balances colors with less blue
 - Same as Indoor with version 2.6 code

Embedded MCU

VAS Improvements

- Voice activate Switching performance enhancements to:
 - Up-speeding
 - Down-speeding
- Support for H.263/H.263+ video codecs
 - Previously only H.264 video codec
- Support for G.722.1c (Polycom[®] Siren14[™]) audio codec
 - Previously only G.711 audio codec

Directory

- Support for empty Redial List
 - ➔ Maximum Redial Entries menu now includes None option
 - ➔ Selecting None option removes existing entries and prevents new entries from entering Redial List

Increased Bandwidth Throughput

- New call bandwidth increased across all LifeSize video systems
 - Higher end values improve motion handling
- New values appear in bandwidth selection box on the video screen
- Two new mid-range bandwidth options added:
 - 896 Kbps
 - 640 Kbps

New Total Bandwidth Throughput	
System Model	Maximum Bandwidth
LifeSize Room	6 Mbps
LifeSize Team LifeSize Team MP	4 Mbps
LifeSize Express	2 Mbps

Save & Restore Capability

- Administrator can save and restore system configuration
- Used to restore same system or as template for other LifeSize systems
- File can be edited manually to customize config
- Save/Restore function available via
 - ➔ Web Administration – System Save
 - ➔ Command Line Interface (CLI) – get config

LifeSize Networker Support

- LifeSize Networker System Information page now available for LifeSize Room/Team MP (tethered mode)
 - ➔ Access details via User and Web Administration Interface
 - ➔ Status fields include:
 - **ISDN** – None, Initializing, Initialized, Ready, Error
 - **Total Bandwidth** – Number of B channels available
 - **PRI/BRI** – None, Up, Down
- LifeSize Room/Team MP support for standalone configuration
 - ➔ Identical to process for LifeSize Express/Team
 - ➔ Refer to LifeSize Networker Product Information Guide for configuring standalone LifeSize Networker unit

Management Improvements

- LifeSize custom MIBs for call related information and associated traps
 - Queried through SNMP for call statistics and traps
- New Company Logo configuration preference
 - Administrators can choose to hide or show LifeSize branding in user interface
- Support for copying text in Web User Interface
 - Improves troubleshooting process
- NAT Public IP Address
 - preference now accepts IP Address or Hostname (new)
- Revisions to LifeSize automation command line interface
 - Added several new objects and targets
 - Refer to LifeSize Automation CLI Interface manual for list of all new, revised and deprecated changes

Mgmt Improvements (cont'd)

- Screen Saver timeout new low setting
 - 1 minute options for both Screen Saver Timeout/Sleep Timeout
- User Interface remains visible when system is overheating
 - Ensures warning is visible at all times
- Additional maximum call times
 - Now support between 8 and 24 hour options
- Comma in a number function as a pause delimiter
 - Allows one second pause in dialing sequence
 - Useful for PSTN calls that require pause while accessing outside line

See LifeSize 3.5 Release Notes for further details

Training Support

- Visit www.lifesize.com/support

• Life

• LifeSize training Modules updated



Language: [English](#) [Français](#) [日本語](#)

LifeSize® PRODUCTS SOLUTIONS COMPANY PRESS PARTNERS CONTACT US SUPPORT

Support

LifeSize® Communications strives to provide our customers and partners excellent service and support. We are always ready to assist you in maximizing the return on your LifeSize investment.

To contact a LifeSize support professional, call 1-877-LIFESIZE (outside the U.S. +1 512.347.9300) or use our [online form to submit your request](#). If you have questions, concerns, or need assistance, contact LifeSize support or your authorized LifeSize partner.

LifeSize welcomes your comments regarding our products and services. If you have feedback on any LifeSize solutions, send an email to feedback@lifesize.com. To review our legal attributes and patent information, visit our [legal support](#) page.

For Downloads, Documentation and Release Notes and Warranty Information please choose a product:

Services

- ◆ [LifeSize Assurance Services](#)

Products

- ▢ **Video**
 - ◆ [LifeSize Room](#)
 - ◆ [LifeSize Team](#)
- ▢ **Audio**
 - ◆ [LifeSize Phone](#)
- ▢ **Infrastructure**
 - ◆ [LifeSize Transit](#)
 - ◆ [LifeSize Networker](#)
 - ◆ [LifeSize Gateway](#)
 - ◆ [LifeSize Multipoint](#)
- ▢ **Management**
 - ◆ [LifeSize Control](#)
 - ◆ [LifeSize Gatekeeper](#)
- ▢ **Accessories**
 - ◆ [LifeSize SDI Adapter](#)

Support

- ◆ [LifeSize Room](#)
- ◆ [LifeSize Team](#)

Audio

- ◆ [LifeSize Phone](#)

Infrastructure

- ◆ [LifeSize Transit](#)
- ◆ [LifeSize Networker](#)
- ◆ [LifeSize Gateway](#)
- ◆ [LifeSize Multipoint](#)

Management

- ◆ [LifeSize Control](#)
- ◆ [LifeSize Gatekeeper](#)

Accessories

- ◆ [LifeSize SDI Adapter](#)

Download Software

[Click Here](#)

Looking for an answer?

- ◆ [Try the LifeSize Solution Center](#)

HDTV Buyers Guide

Recommended Displays for High Definition Video Communications

- ◆ [HDTV Buyers Guide](#)

World Wide Implementation

- ◆ [LifeSize Global Implementation Services](#)

Contact Support

- ◆ [Online Support Request Form](#)

Next Steps

- Download LifeSize Software version 3.5 immediately

<http://www.lifesize.com/service>

- Visit LifeSize Portal for more information, data sheets, documentation:

<http://www.lifesize.com/partners>

<http://www.lifesize.com/products>